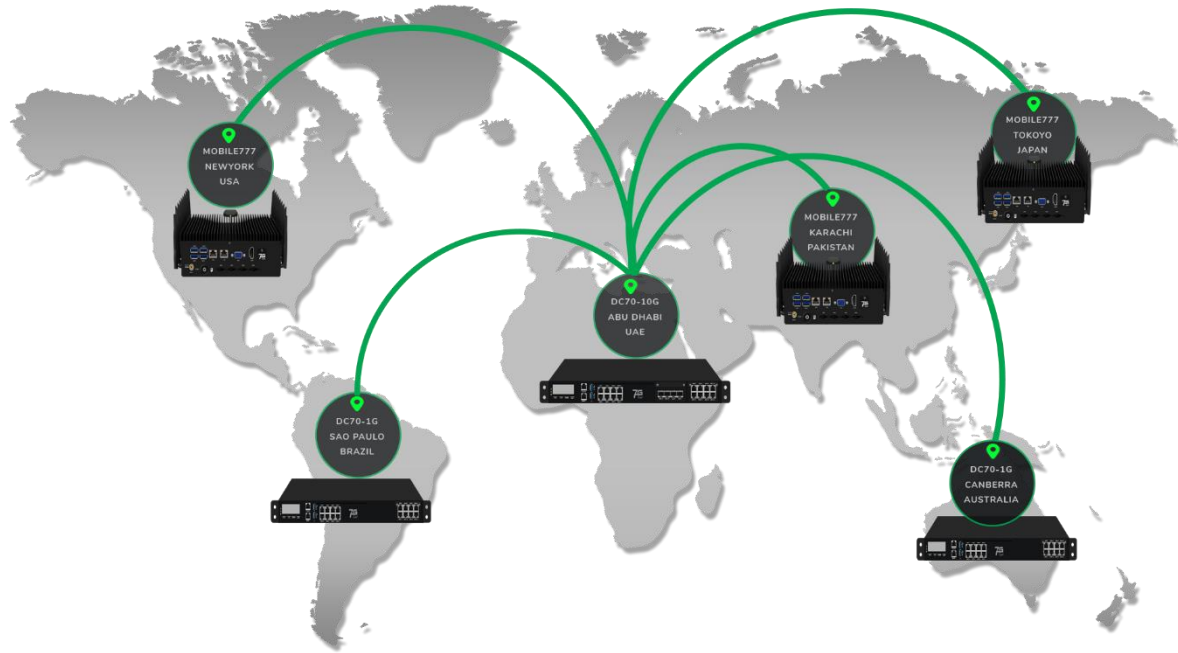


# Centralized Management System



On-Premises | Locally Hosted | Virtual Appliance

**Supports up to 100+ 7G-Fuse Nodes**

A Centralized Portal to Configure, Manage and Monitor All  
7G-Fuse Appliances Nodes Deployed in Remote Sites.

### SPECIFICATIONS

#### Abur Central Management Server

Virtual Environment	Environment Virtual Machine OVF (Open Virtual Format) – ESXi Compatible (6.5 and 7.0)
VM Specifications	4 Core Processor Storage – 10GB HDD 8 Gb RAM

#### Abur Database Server

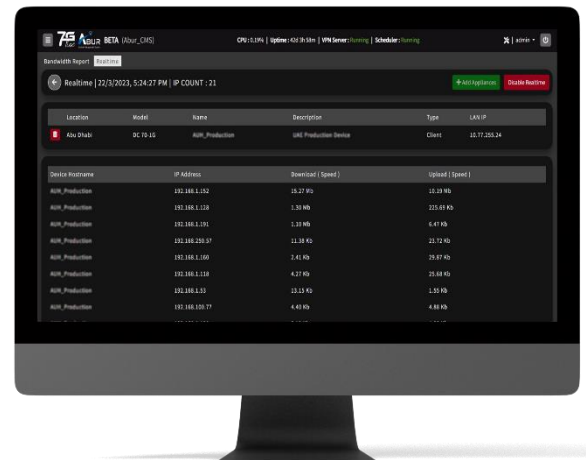
Virtual Environment	Environment Virtual Machine OVF (Open Virtual Format) – ESXi Compatible (6.5 and 7.0)
VM Specifications	4 Core Processor Storage – 100GB HDD 16 Gb RAM
Node Capacity	Node Capacity 100 (With Above mentioned Specs) Will require an upgrade in server specs for further nodes

**NOTE:** There will be two separate virtual machines for Abur GUI Server and Abur Database Server. All the data will be stored in Abur database server while access of all the features provided by Abur will be accessible through Abur GUI Server.

## FEATURES

### Realtime Bandwidth Per IP

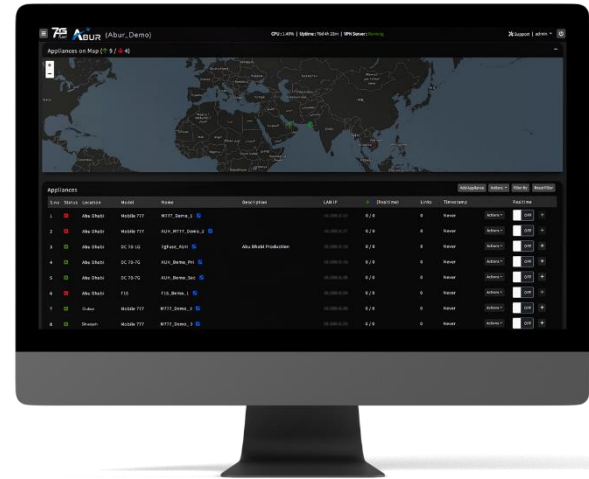
Upon enabling the IP statistics feature, 7G-Fuse node will push per IP bandwidth utilization in real-time to Abur which can be viewed from the Abur GUI as well as stored in the Abur database server. This will help the Abur administrator to monitor real-time bandwidth utilized by each user at a remote site and generate historical PDF reports for forensics / troubleshooting.



# FEATURES

## Centralized Access

Regardless of wherever the device is, as long as it is connected to Abur it is accessible.



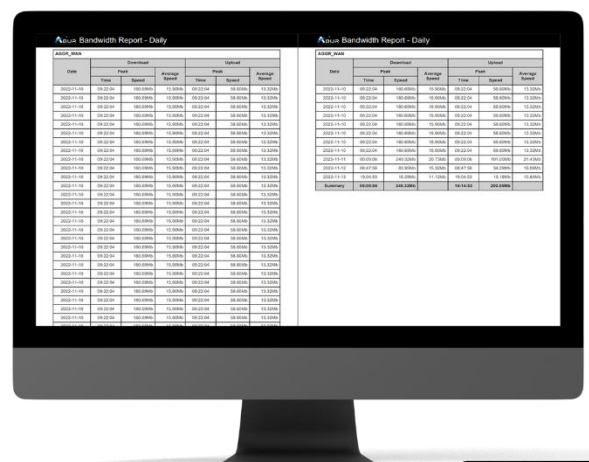
## Real-Time Device Monitoring

Real-time Monitoring of all critical services in 7G-Fuse appliances from a Centralized Location (Abur).



## Centralized Data Collection

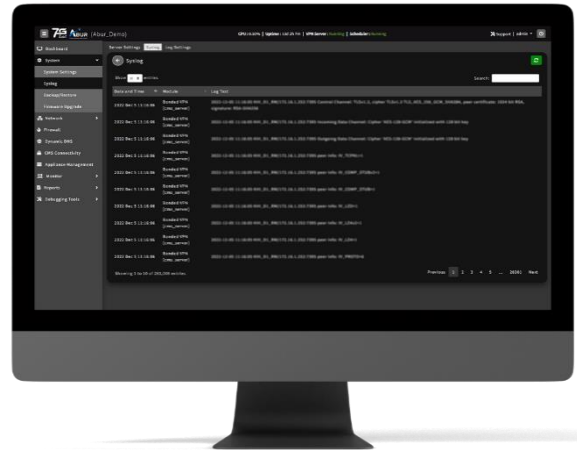
Critical Data from 7G-Fuse appliances is stored in the Abur Database server to generate historical PDF reports for Bandwidth, Data utilization and Sessions.



# FEATURES

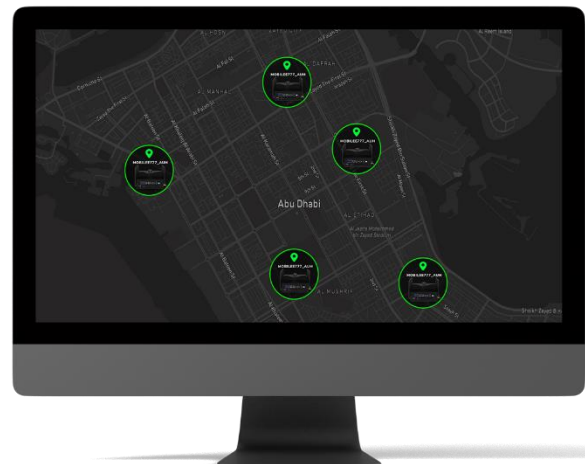
## Alerts and Logs

Security Logs, Centralized Syslog, Log facility. Logs are specifically done to keep track of Network Devices and Systems.



## Precise Geo-Tracking

Keeps track of all the 7G-Fuse Appliances by receiving real-time GPS Location updates from the Device to Abur.



## Centralized Upgrade Server

Firmware Upgrades of the Devices can be performed on a click directly through Abur without any need of Physical presence of the End-User on Site.

