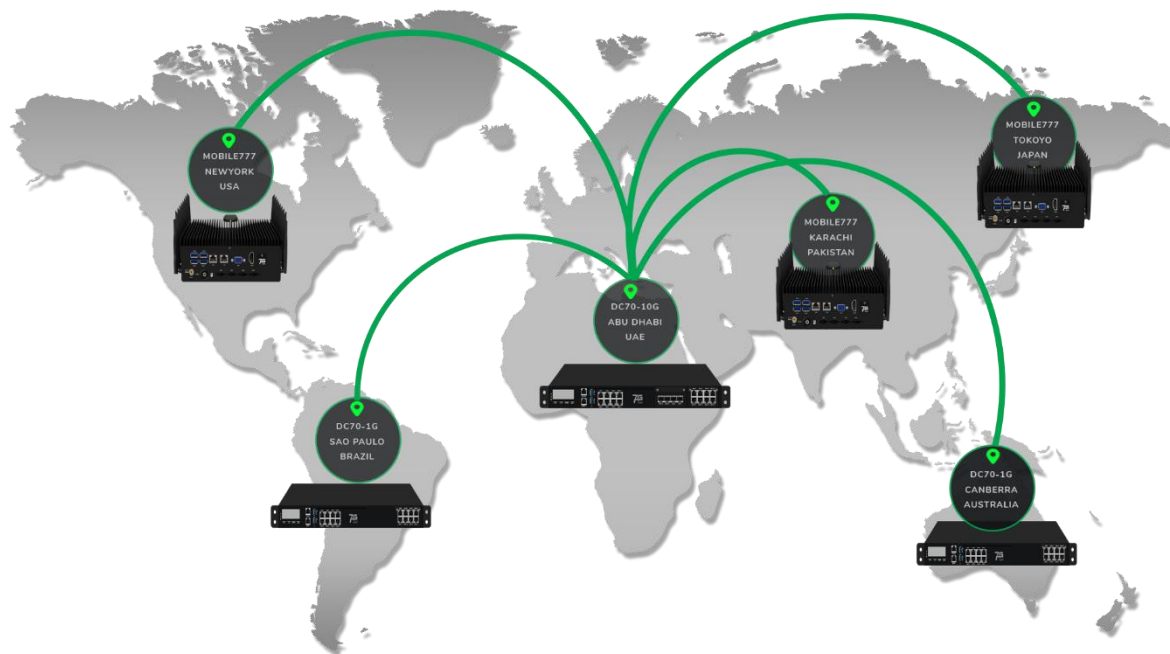


Centralized Management System

7G Fuse



On-Premises | Locally Hosted | Virtual Device

Supports up to 100+ 7G-Fuse Nodes

A Centralized Portal to Configure, Manage and Monitor All
7G Fuse Device Nodes Deployed in Remote Sites.

SPECIFICATIONS

Abur Central Management Server

Virtual Environment	Environment Virtual Machine OVF (Open Virtual Format) – ESXi Compatible (6.5 and 7.0)
VM Specifications	4 Core Processor Storage – 10GB HDD 8 Gb RAM

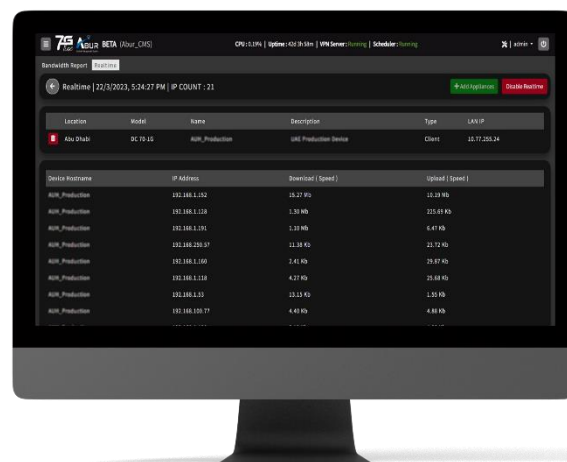
Abur Database Server

Virtual Environment	Environment Virtual Machine OVF (Open Virtual Format) – ESXi Compatible (6.5 and 7.0)
VM Specifications	4 Core Processor Storage – 100GB HDD 16 Gb RAM
Node Capacity	Node Capacity 100 (with above mentioned specs) Will require an upgrade in server specs for further nodes

NOTE: There will be two separate virtual machines for the Abur GUI Server and the Abur Database Server. All data will be stored on the Abur Database Server, while access to all functions provided by Abur will be possible via the Abur GUI Server.

Realtime Bandwidth Per IP

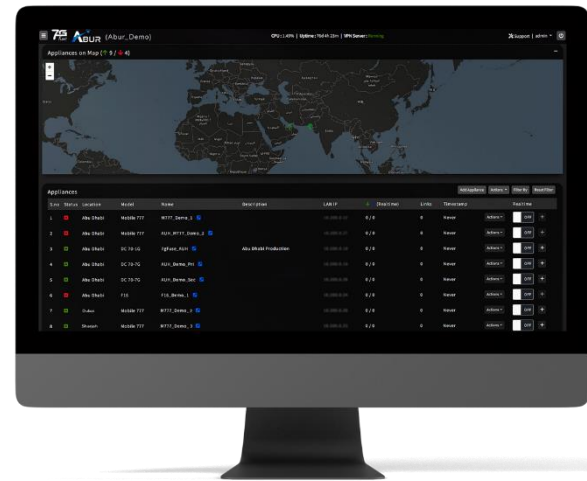
After enabling the IP statistics function, the 7G Fuse node will report IP bandwidth usage in real-time to Abur, which can be viewed by the Abur GUI and stored in the Abur database server. This helps the Abur administrator monitor the bandwidth used by each user at a remote site in real time and generate historical PDF reports for forensics / troubleshooting.



FEATURES

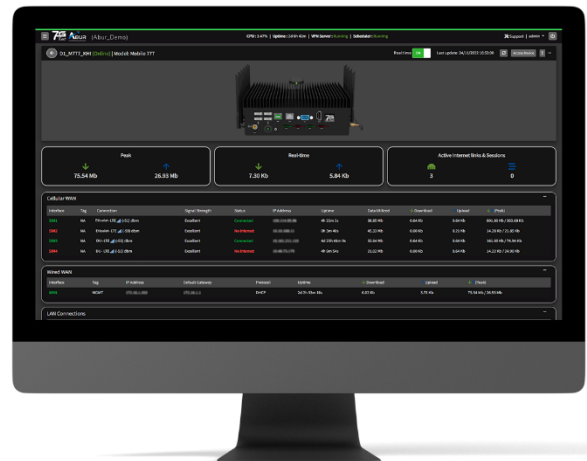
Centralized Access

Regardless of where the device is located, as long as it is connected to Abur, it is accessible.



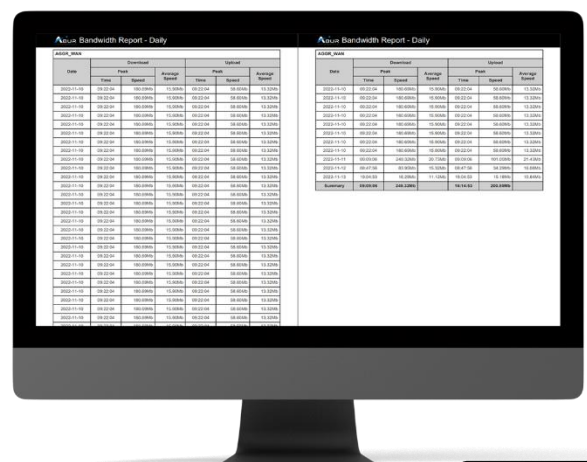
Real-Time Device Monitoring

Real-time monitoring of all critical services in 7G Fuse devices from a centralized location (Abur).



Centralized Data Collection

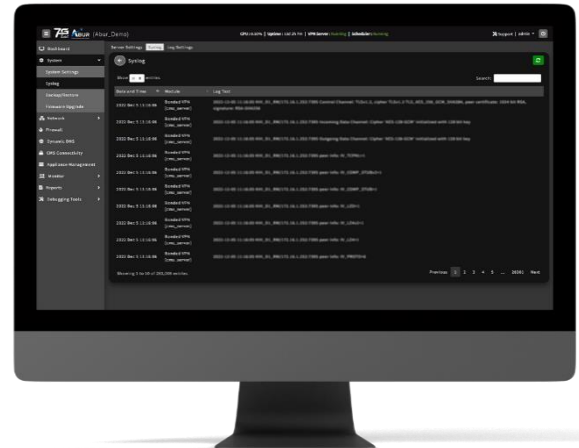
Critical data from 7G-Fuse devices is stored on the Abur database server to generate historical PDF reports for bandwidth, data utilization bandwidths, data usage and sessions



FEATURES

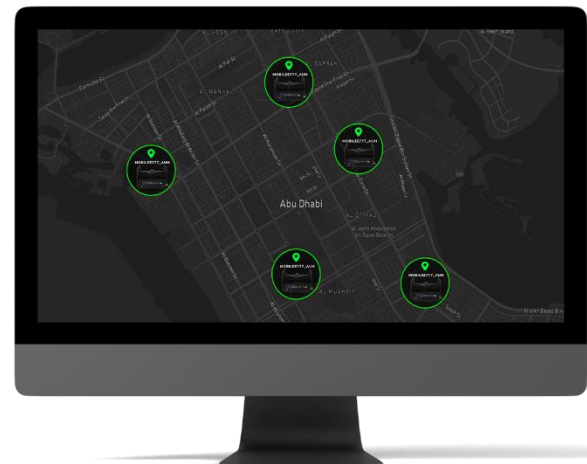
Alerts and Logs

Security logs, centralized Syslog, log facility. Logs are specifically designed to keep track of network devices and systems.



Precise Geo-Tracking

Maintains an overview of all 7G Fuse devices by receiving real-time GPS location updates from the device to Abur.



Centralized Upgrade Server

Firmware upgrades of the devices can be performed directly by Abur with one click, without requiring the physical presence of the end user on site location.

